

Lady's Island Lake Feeder Streams

Source: <https://www.southwexfordcoast.com/>. Leaflet version date: March 2025.

In 1984, the Environmental Protection Agency (EPA) deemed that Lady's Island Lake had twelve feeder streams (EPA, 1984). These were identified by number clockwise from the south-western to the south-eastern corner of the catchment (Figure 1, left, coloured blue; EPA, 2001). Currently, pursuant to the European Union Water Framework Directive (WFD), the EPA maps seven named river waterbodies discharging to the lake (Figure 1, right) (<https://gis.epa.ie/EPAMaps/>). All seven of these river water-bodies share the same WFD code: IE_SE_13K140950.

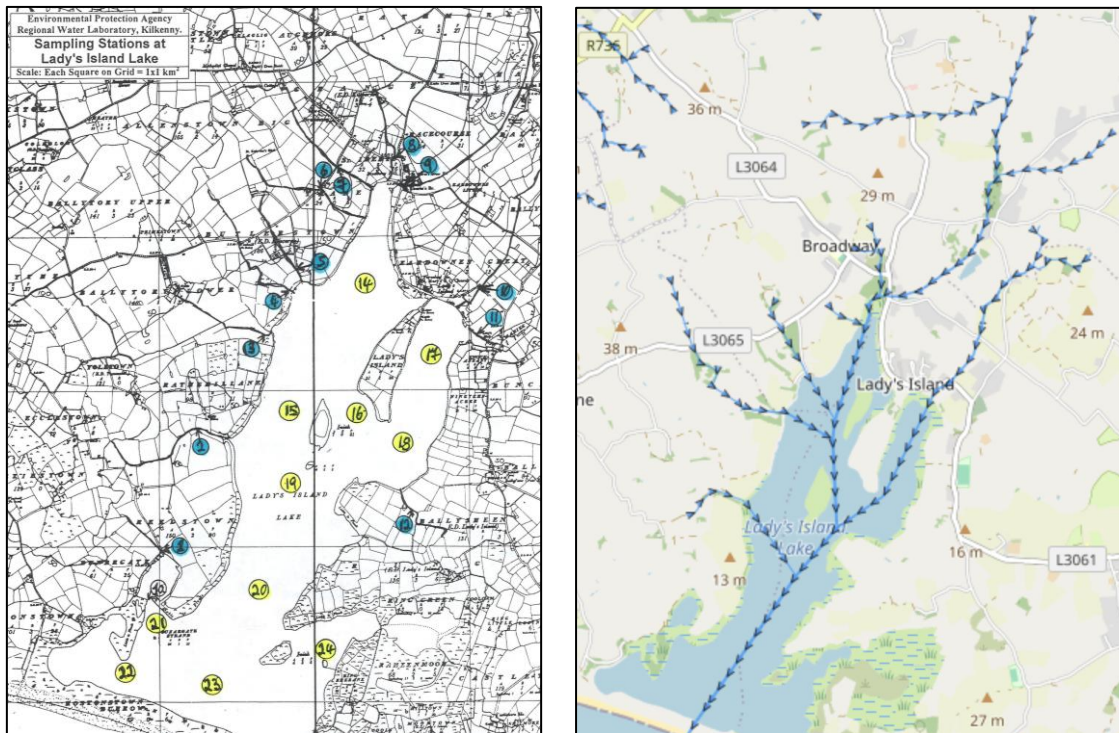


Figure 1. Feeder streams at the Lady's Island Lake catchment.

The former (1984) and current feeder stream EPA identifiers are tabulated below (Table 1) together with additional data sourced from both <https://gis.epa.ie/EPAMaps/> and O'Connor *et al.*, 2024 pages 2-3. Water quality status in 1984 is quoted from Neill, 1984 page 4. When combined, the catchment of the seven feeder streams is 10.18km². The total area of the lake's catchment (Figure 2) is 19.16km².

1984 EPA No	Current EPA Name	EPA Code	Stream order	Length (m)	Catchment (km ²)	Water quality status in 1984
1						"Stream too small for sampling."
2	Strand	13S17	1	567	1.23	"Intermittent pollution ."
3	Trane	13T12	2	306	1.18	"Possible intermittent pollution ."
4						"Badly polluted on all sampling dates."
5	Racecourse	13R17	1	698	0.58	"Badly or moderately polluted ..."
6	Eardownes Little	13E01	1	324	0.34	"Polluted on some sampling dates".
7						"Polluted on some sampling dates".
8	Stonyford	13S16	2	381	1.16	"Possible intermittent pollution ."
9	Kisha	13K14	2	1522	4.20	"Polluted on some sampling dates".
10	Coldblow	13C38	2	1424	1.49	"Badly polluted on all sampling dates."
11						"Elevated nitrate levels."
12						"Stream too small for sampling."

Table 1. Lady's Island Lake feeder streams.

The most recent (2013-2018) EPA assessment of water quality in the feeder streams is that the status of all seven streams is estimated to be "Moderate" based on "expert

- SWC Promotions: promoting the natural heritage resource values of the South Wexford Coast •

judgement" rather than sampling. Whether the streams are at risk of not achieving good water quality by 2027, as required by the WFD, is currently flagged for "Review" (<https://gis.epa.ie/EPAMaps/>).



Figure 2. Lady's Island Lake catchment (watershed in red) and feeder streams (blue).

(Source: O'Connor et al., 2024 page 2, Figure 2.1)

References

- Neill, M. 1984. *Water Quality in Lady's Island Lake and Feeder streams, Co. Wexford - 1984*. Unpublished report commissioned by Wexford County Council. Kilkenny: An Foras Forbartha Regional Water Laboratory.
- Neill, M. 2001. *Water Quality in Lady's Island Lake and its Feeder Streams – 2001*. Unpublished report commissioned by Wexford County Council. Kilkenny: Environmental Protection Agency Regional Water Laboratory.
- O'Connor, B., Oliver, G., Cawley, T., Roden, C., Perrin, P., de Witt, R., McCaffrey K., and O'Connor, A. 2024. *Coastal Lagoons: Ecology and Restoration (CLEAR)*. Report prepared for the Environmental Protection Agency by AQUAFAC, part of the APEM Group. EPA Research Report No 474. Wexford: Environment Protection Agency. Available online at https://www.epa.ie/publications/research/water/Research-Report_473.pdf.

- SWC Promotions: promoting the natural heritage resource values of the South Wexford Coast •